



In-Situ Inc.



Innovations in Water Monitoring



In-Situ® Inc. is a worldwide leader in designing, manufacturing, and distributing environmental measurement equipment and advanced data management software. For over 40 years, we have provided water monitoring markets with innovative solutions and have been granted numerous patents.

Our world-class facility is equipped with technologically-advanced production equipment that complements our lean manufacturing practices. These manufacturing practices deliver high quality and value to our customers. In-Situ has a product portfolio of over 700 products, which have been installed in over 70 countries to a growing customer base of over 4,500.

What Makes In-Situ a Leader?

Quality

At In-Situ, we strive to provide the best customer experience. We continually improve every facet of our operations by applying best practices throughout the company. Customers benefit from breakthrough technologies and software, fast delivery, and industry-leading service.

Accuracy and Reliability

Our products are carefully engineered for accurate and reliable measurement of water level/pressure, dissolved oxygen (DO), conductivity, pH/ORP, turbidity, barometric pressure, and temperature. Unlike other manufacturers, we provide a NIST®-traceable calibration report with appropriate products¹ and individually calibrate level/pressure instruments over the full pressure and temperature range of the instrument. All of our products must pass a quality assurance check prior to shipment.

Total Cost of Ownership

Whether it is by eliminating unnecessary field visits or reducing operating expenses and downtime costs, In-Situ Inc.'s solutions allow customers to improve efficiency and minimize total cost of ownership.



¹ National Institute of Standards and Technology (NIST) – calibration reports provided with Level TROLL 300, 500, and 700, Rugged TROLL 100 and 200, and Aqua TROLL 100 and 200 instruments.

“The TROLL® 9500 System was easy and quick to assemble when we finally reached the [cave] pool,” reported Dr. David Levy.

“We measured key parameters at the Lake of White Roses, which is almost 1,500 feet below Carlsbad Cavern’s surface. The instrument had more than ample power to conduct all of our testing, and the software was easy to use.”

— Researchers exploring Lechuguilla Cave at Carlsbad Caverns National Park, New Mexico, U.S.A.

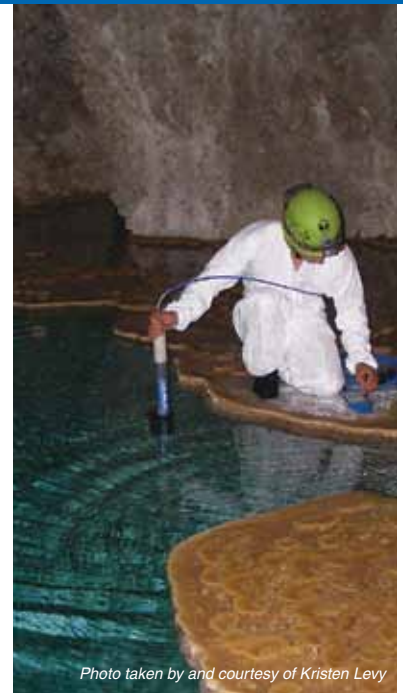


Photo taken by and courtesy of Kristen Levy

Technical Support

Representing the best in their fields, In-Situ Inc.'s technical support department is staffed with scientists specializing in geology, biology, watershed/catchment management, and short- and long-term monitoring applications. Our after-sales expertise ranges from product configuration to installation, maintenance, and troubleshooting.

Our team of specialists, located at our world headquarters in Fort Collins, Colorado, is available 24 hours a day, 7 days a week, every day of the year. Technical support is included at no additional charge to help our customers get the most out of their investment.

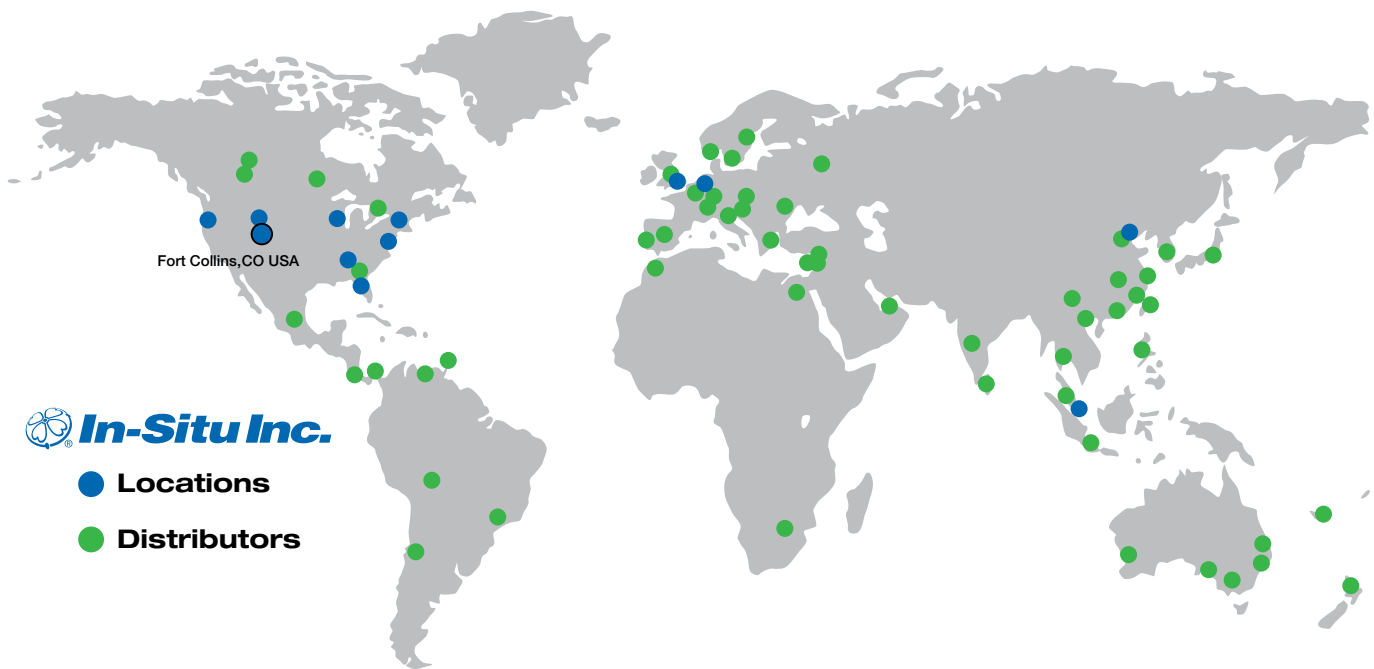
Providing a local presence on a global basis, our in-country managers and worldwide network of wholly-owned subsidiaries and distributors are positioned to ensure a rapid response to critical project requirements.

*In-Situ Inc.'s newest generation
Aqua TROLL® 200 Instrument*





In-Situ Inc. headquarters are located at the foot of the Rocky Mountains in Fort Collins, Colorado, U.S.A. In-Situ Inc. has a network of regional offices, international subsidiaries, and distributors that offer complete local service and support around the globe.



In addition to being innovators in the design of world-class water monitoring equipment, experts in the water business, and leaders in lean enterprise, In-Situ Inc. strives to be stewards of the environment and community by:

- Using 100% wind power at corporate headquarters since 2006
- Receiving the Gold Partner Award from the City of Fort Collins Climate Wise Program — an environmental stewardship initiative
- Maintaining local hiking trails, donating to food banks, and partnering with Habitat for Humanity and The United Way
- Achieving ISO 14001 for the Environmental Management System at Waterra™ UK Limited, an In-Situ subsidiary

In-Situ introduces the first **data logger** in the industry that combines ruggedness with ease-of-use and high accuracy for pump tests and long-term monitoring.

1984



In-Situ releases its first all-in-one **data logger/transducer/temperature sensor** that quickly becomes the industry standard for a complete, self-contained, long-term monitoring solution for groundwater.

1995



In-Situ adds the Aqua TROLL to their water quality product portfolio.

2006

In-Situ introduces the new **ConTROLL® PRO** System for process control and environmental monitoring applications.



In-Situ enters the aquaculture market with the acquisition of **Integrator Aqua Systems, Inc.**



2009

1989

In-Situ launches the world's first **in-well water level data logger**.

2004

In-Situ brings the first **Optical DO Sensor** to the Environmental Monitoring Market.



2008

In-Situ Inc. launches its proprietary **Rugged DO** technology and receives EPA approval.



2011

In-Situ expands their global presence through the acquisition of **Waterra UK Limited**, a leading UK groundwater monitoring equipment provider.

In-Situ opens offices in **Germany, Singapore, and China.**

In-Situ launches new **rugged water level tapes and meters.**

Leading Innovation

Committed to continuous innovation, our patented designs are a result of decades of extensive research and development. Originating from the “voice of the customer” and refined through testing and years of field deployment, In-Situ equipment has been proven by customers and industry professionals worldwide.



“Since automating several [fish] ponds on my farm, I’ve seen a 100 percent change in what we’ve had to deal with,” Lowery said. “We don’t have to worry about missing oxygen crashes before the night shift starts working. In-Situ Inc.’s system probably saved me two ponds of fish this year and we are forecasting a 32% decrease in energy costs, 31% reduction on repairing and maintaining aerators, and a 29% reduction in labor costs.”

— Joey Lowery of Lowery Aqua Farms, Arkansas, U.S.A.

Products

Water Level

From advanced aquifer characterization, to long-term monitoring, to economical data collection, you’ll find water level instruments perfectly suited to your application and budget.

Water Quality

In-Situ Inc. provides field-ready, multiparameter instruments for measuring and logging important environmental parameters — DO, conductivity, turbidity, pH/ORP, and more. We offer water quality instruments suited to groundwater and surface water applications.

Aquaculture

Aquaculture operations improve yields, control costs, and significantly reduce risk of loss through automated DO monitoring. Continuous monitoring can improve feed conversion ratios, minimize fish stress, and reduce fish disease and mortality. In-Situ Aquaculture offers several solutions for improving return on investment, optimizing DO management, reducing energy consumption, and increasing overall production efficiency.

In addition to product groups listed here, In-Situ offers solutions for laboratory testing, wastewater process monitoring, and other commercial applications.

OEM

In-Situ Inc.’s Rugged Dissolved Oxygen (RDO®) technology has rapidly gained acceptance as the premier technology for optical measurement of DO. Customers such as HF Scientific, Mettler Toledo, Mohn Aqua, Ocea, Rosemount Emerson, Storvik, Thermo Scientific AquaSensors, Thermo Orion, USA Bluebook, and others have recognized the value of RDO technology. These companies bring the power of RDO technology to their customers through OEM agreements with In-Situ. The U.S. Environmental Protection Agency has also recognized RDO technology as an approved method for measuring DO, Biochemical Oxygen Demand, and Carbonaceous Biochemical Oxygen Demand.



“Real-time monitoring helps the ethanol plant stay in compliance and keeps groundwater pumps operating at optimal efficiency. By managing the drawdown and reducing the lift required to pump water, the plant will save over \$20,000 annually in electrical costs.”

— John E. Dustman,
President of Summit Envirosolutions, Inc.

Applications

Our patented designs result from decades of extensive scientific research, testing, and development. Originating from customer requirements that are translated into value-added, engineered solutions, In-Situ equipment has been successfully proven in the lab and field and in a wide variety of applications. In-Situ Inc.'s water level and water quality measurement solutions will support monitoring requirements for:

- Aquaculture production
- Coastal environments
- Construction sites
- Environmental research and restoration
- Flood and storm surge analysis
- Groundwater and surface water resource management
- Landfills
- Mining
- Remediation
- Saline intrusion
- Tidal analysis
- Utilities
- Water conservation

*In-Situ Inc.'s TROLL 9500
Water Quality Instrument*





In-Situ Inc.'s family of Level TROLL and Rugged TROLL® products

“During the past two droughts, we’ve collected a lot of water level data using Level TROLL® 500 Instruments placed throughout the District. Due to the accuracy and precision of the Level TROLL Instruments, we have been able to more closely correlate data from Barton Springs to water levels in the Lovelady monitor well.”

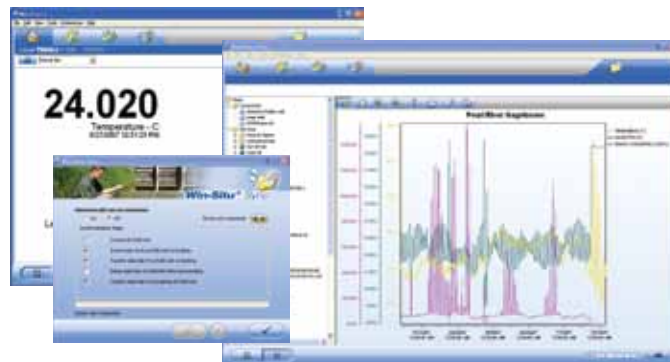
— Brian B. Hunt, P.G. at the Barton Springs/Edwards Aquifer Conservation District, Texas, U.S.A.

Communication

In-Situ Inc. provides numerous communication options for your water level or water quality instrument in the field or in the office.

Industry-leading Win-Situ® Software from In-Situ Inc. is the communication platform used to set up instruments and manage data. Powerful, easy-to-use Win-Situ Software is included with the purchase of any In-Situ instrument. Win-Situ Mobile Software is included with the purchase of an In-Situ RuggedReader® Handheld PC.

TROLL® Link Telemetry Systems offer reliable, secure access to remote site data 24 hours a day. Our instruments are designed with open access in mind and can be used with third-party telemetry systems.



In-Situ Inc.'s Win-Situ Software

“The TROLL® 9500 units are easy to calibrate, and we don’t have to recalibrate as often as some of our other instruments. They have been really reliable, and they were easy to integrate with a sampler. We have been very satisfied with the performance of the TROLL 9500s.”

— Mike Piehler, researcher at the University of North Carolina



Rentals

We understand that every project is unique. Whether it is for short-term projects when you don’t want to purchase the equipment outright or when the budget simply won’t stretch that far, try In-Situ® Rentals. When you work with our knowledgeable rentals team, you’ll receive the equipment you need to meet your data and budget requirements. In-Situ Rentals offers a range of products and supplies.

We provide you with the newest equipment and technology that is tested and calibrated by factory technicians prior to each project. This ensures reliability in the field, which reduces downtime due to old, defective, or poorly maintained equipment.

We also include free product training, either on-line or at your office/site, to increase operator confidence, reduce errors, and improve data quality and productivity.



In-Situ Inc.'s RuggedReader Handheld PC, Rugged Level Tape 200, Virtual HERMIT® Aquifer Testing Kit, and RuggedCable® Systems

Case Studies



Water Quality

Situation:

Chesapeake Bay witnessed a 70% decline in its blue crab population from 1990 to 2007 as a result of degrading water quality. The decline in blue crab population has taken a \$640 million economic toll and cost 4,500 jobs since 1998.

Product Used:

AquaTROLL® Instruments were deployed at 50 water monitoring stations to provide data analytics to help protect the Chesapeake Bay's blue crab population.

Benefits:

- Low maintenance
- Extended deployment
- Flexible power options
- Exceptional performance in harsh environments



Water Level

Situation:

Hurricane Katrina devastates the City of New Orleans.

Product Used:

LevelTROLL® Instruments are deployed at 115 sites in New Orleans area and play a key role in provide New Orleans with water level analytics. The city can prepare itself with the necessary infrastructure in the event of another major hurricane.

Benefits:

- Yields accurate level, pressure, and temperature measurement data
- Powerful data logging and flexible communications
- 5 years/2 million readings from internal battery
- Data collection is simplified and managed with Win-Situ Software.



Aquaculture

Situation:

Rising operating costs due to manually checking DO and controlling aerators, prompt Lowery Aqua farms to investigate automation of DO management.

Product Used:

Forty-four In-Situ Aquaculture Management Systems were installed. Two ponds of fish were saved because the aerators turned on automatically when DO levels dropped.

Benefits:

- Wireless aquaculture system simplifies fish farming by automating DO monitoring and aeration control in controlled environments.
- Increased yields and minimized crop loss, repairs, and maintenance
- Decreased energy, labor, and maintenance costs by over 30%



RDO® Technology

Situation:

DO is one of the most critical water quality parameters. Many industries require accurate measurements, approved methods, durability, and easy-to-use equipment.

Product Used:

RDO® Family of products for lab, process, and field applications

Benefits:

- Approved by the U.S. Environmental Protection Agency
- Can be cleaned and redeployed without calibration
- Lower total costs with fewer site visits
- Superior accuracy and precision with fast, stable response
- Durable in abrasive environments



Contact Information

World Headquarters Sales and Rentals in North America

In-Situ Inc.

221 East Lincoln Avenue
Fort Collins, Colorado 80524 U.S.A.
tel: 800-446-7488 or 970-498-1500
fax: 970-498-1598
email: sales@in-situ.com
www.in-situ.com

Sales in Europe

In-Situ GmbH

Traarer Str. 15
47829 Krefeld
Germany
tel: +49 2151 650388 10
fax: +49 2151 650388 30
email: infoeu@in-situ.com
www.in-situ.com

Sales and Rentals in the United Kingdom and Ireland

Waterra (UK) Ltd. *an In-Situ Inc. Company*
179-189 Stratford Road
Shirley, Solihull, West Midlands
B90 3AU United Kingdom
tel: +44 (0) 121 733 7743
fax: +44 (0) 121 733 7746
email: sales@waterrauk.com
www.waterrauk.com

Sales Outside Europe and Asia

North, Central, and South America;
Caribbean; Near and Middle East; Africa;
Australia; New Zealand; and South Pacific

221 E. Lincoln Avenue
Fort Collins, Colorado 80524 U.S.A.
tel: 800-446-7488 or 970-498-1500
fax: 970-498-1598
email: sales@in-situ.com
www.in-situ.com

Sales in Asia

Bangladesh, Cambodia, China,
Hong Kong, India, Indonesia, Japan,
Korea, Laos, Malaysia, Nepal,
Philippines, Singapore, Sri Lanka,
Taiwan, Thailand, and Vietnam

In-Situ Monitoring Asia Pte. Ltd.

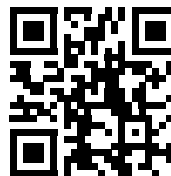
Midview City
Block 22, #02-78 Sin Ming Lane
Singapore 573960
tel: +65 6659 2896
fax: +65 6659 2979
email: sales@in-situ.com
www.in-situ.com

Sales for Aquaculture North America and Latin America

221 E. Lincoln Avenue
Fort Collins, Colorado 80524 U.S.A.
tel: 970-498-1500
fax: 970-498-1598
email: sales@in-situ.com
www.in-situaquaculture.com

For more information, contact In-Situ Inc.

221 East Lincoln Avenue
Fort Collins, CO 80524 U.S.A.
1-800-446-7488 (toll-free in U.S.A. and Canada)
1-970-498-1500 (international and domestic)
www.in-situ.com



To find out more
about In-Situ, Inc. on
your mobile device,
scan the code on your
SmartPhone using
a QR application.